

■ TENTATIVE CASE STATEMENT

# Eastern Shore Chapel

## EPISCOPAL CHURCH

Total Proposed Capital Campaign Goal: \$7,403,562

### Gifts Essential Chart

The following chart illustrates the size and number of gifts necessary for a successful \$7,403,562 capital campaign.

Size of Gift	Number Needed	Cumulative Total	Monthly (Over 3 yrs)
\$1,000,000	1	\$1,000,000	\$27,778
\$750,000	1	\$1,750,000	\$20,833
\$500,000	3	\$3,250,000	\$13,889
\$250,000	4	\$4,250,000	\$6,944
\$100,000	5	\$4,750,000	\$2,778
\$75,000	8	\$5,350,000	\$2,083
\$50,000	12	\$5,950,000	\$1,389
\$25,000	15	\$6,325,000	\$694
\$10,000	25	\$6,575,000	\$278
\$5,000	40	\$6,775,000	\$139
\$3,000	50	\$6,925,000	\$83
\$1,000	80	\$7,005,000	\$28
\$500	130	\$7,070,000	\$14
Less than \$500	Many	Goal achieved	Varies

#### CHURCH LEADERSHIP

##### Present Vestry

Hank Marriott, Senior Warden  
 Carter Sinclair, Co-Junior Warden  
 Kent Crooks, Co-Junior Warden  
 Mary von Kolnitz, Vestry Registrar

Scott Darnell

Ellen Deppe

Ellen Gallup

Lilian Howard

Susan Jones

Lindsay Kirby

Aubrey Layne

Linda Todd

##### Previous Wardens during

*"Build it and God will be glorified"*

James Laurance, Sr., Senior Warden

William Hunter, Junior Warden

John St. John, Jr., Senior Warden

James Laurance, Sr., Junior Warden

Lee Davis, Senior Warden

Stephanie Smith, Junior Warden

William Barns, Senior Warden

Lee Davis, Junior Warden

##### Clergy

The Rev. C. Christopher Thompson

The Rev. Julia S. Ashby

*Eastern Shore Chapel has been a center of growth and change for over 300 years. What was once a small chapel on a remote river is now a large, influential community in the heart of a bustling and diverse population. The farmland of a mere century ago is now filled with homes, apartments, and shopping centers. Military jets fly overhead night and day.*

In recent decades, Eastern Shore Chapel's community is thriving. This is reflected in our transformative growth. When the church moved to its current location in 1954, Eastern Shore Chapel had just over 100 members. Today, our church's youth program alone exceeds that number. In the past three years, nearly 200 new members joined our church and Sunday attendance averages about 425. In addition to three Sunday morning services each week, there are also two mid-week services of Holy Eucharist and a monthly service of Choral Evensong.

During the week, nearly 300 children participate in either the pre-school and day-care programs of ESC's Parish Day School or its summer camp. Rarely is Eastern Shore's meeting space not fully utilized as an average of 20 groups per week gather in the church's meeting rooms. This includes fellowship groups, Bible studies, book clubs, eight local community and support groups, and a daily Alcoholics Anonymous meeting. Our church is also experiencing growth in our outreach ministries. From 2008-2009, the Chapel Pantry experienced a

## Our mission:

CELEBRATE AND LIFT UP THE LOVE OF GOD + PRAY AND PROCLAIM THE LOVE OF CHRIST + RECEIVE AND SEND FORTH THE LOVE OF THE HOLY SPIRIT

nearly 40% increase in the number of families they served. Currently, our parish provides food for up to 350 families, made possible by donations from our church parishioners.

This growth, while exciting and invigorating, presents a host of challenges and new opportunities for the parish. For example, the choir, which has more than doubled in size since 2001, has outgrown the church's choir loft and continues to grow. With nearly 150 children in Sunday school each week, classes are overflowing and are forced to utilize every available space, including the rector's office, the flower room and hallways at times.

The Vestry and membership of Eastern Shore Chapel are facing the challenges that accompany the growth of our

church with faith and joy. The people of Eastern Shore Chapel are re-thinking the definitions of stewardship, gratitude, sacrifice and priority. At a recent parish meeting, church members shared and discussed their vision for the future of Eastern Shore Chapel community. "All are welcome," "...growing where Christ leads us," and "hands open, reaching out" were common refrains.

There is great excitement about what the future holds for Eastern Shore Chapel. It's clear that Eastern Shore Chapel's mission—to celebrate God's love and work in our lives and in the world—is more than just a statement. We believe our parish has grown because of the contributions of spirit, time, energy, and financial resources that have been provided by our members. It's a way of

living daily, welcoming change and growth while recognizing the pain that often accompanies it, and living fearlessly as the Body of Christ in the world.

Our congregation is looking forward to its maturity as a corporate church. When calling our present rector, we identified four goals in our Parish:

- Match stewardship performance to parish growth
- Maintain and expand ESC's physical plant
- Expand and strengthen outreach programs
- Honor our mission statement

This vision of faith, coupled with God's will, promises to be an exciting journey for Eastern Shore Chapel parishioners.

## Proposed Solutions...

### I. Parish Hall Enlargement: \$1,901,777

- A. Increase seated (table) capacity to 192 from existing 120
- B. Improve interior and flooring

### II. Administrative Area Modifications: \$2,175,400

- A. Move existing administrative offices to new second floor at rear of building

- B. Increase square footage by 2,780 s.f., by adding second floor, for administrative functions (*See II-A*)

- C. Move Chapel from rear of building to front of Administrative wing
- D. Install Elevator to 2nd Floor
- E. Modify and improve kitchen
- F. Move and enlarge the Chapel Pantry
- G. Move reception area to side of building

- H. Provide for additional multipurpose rooms on second floor for youth activities, Vestry and committee meetings, and community groups

- I. Move Library next to Parlor and create a Special Events room for brides, reception area for families before funerals

### III. Parish Day School Renovations: \$1,359,478

- A. Renovate interior of existing classrooms
- B. Provide for entrance lobby on south wing of Parish Day School with driveway
- C. Move and improve kitchen facilities to code (additional 1,020 s.f.)

- D. Provide for additional classrooms with movement of Chapel to front of building complex
- E. Enlarge choir room facilities
- F. Improve security of Parish Day School

### IV. Enhanced Worship Space: \$1,389,169

- A. Move choir from South Transept to new chancel
- B. Move Sacristy and flower room to back of new chancel area.
- C. Move existing loft organ to new chancel/choir area
- D. Modify loft for additional seating.
- E. Increase kneeling area at communion rail; relocate liturgical furniture (pulpit and lectern)

### V. Covered Walkways: \$577,738

- Install brick covered walkways to interconnect Parish Hall, Narthex, side main entrance and Sacristy

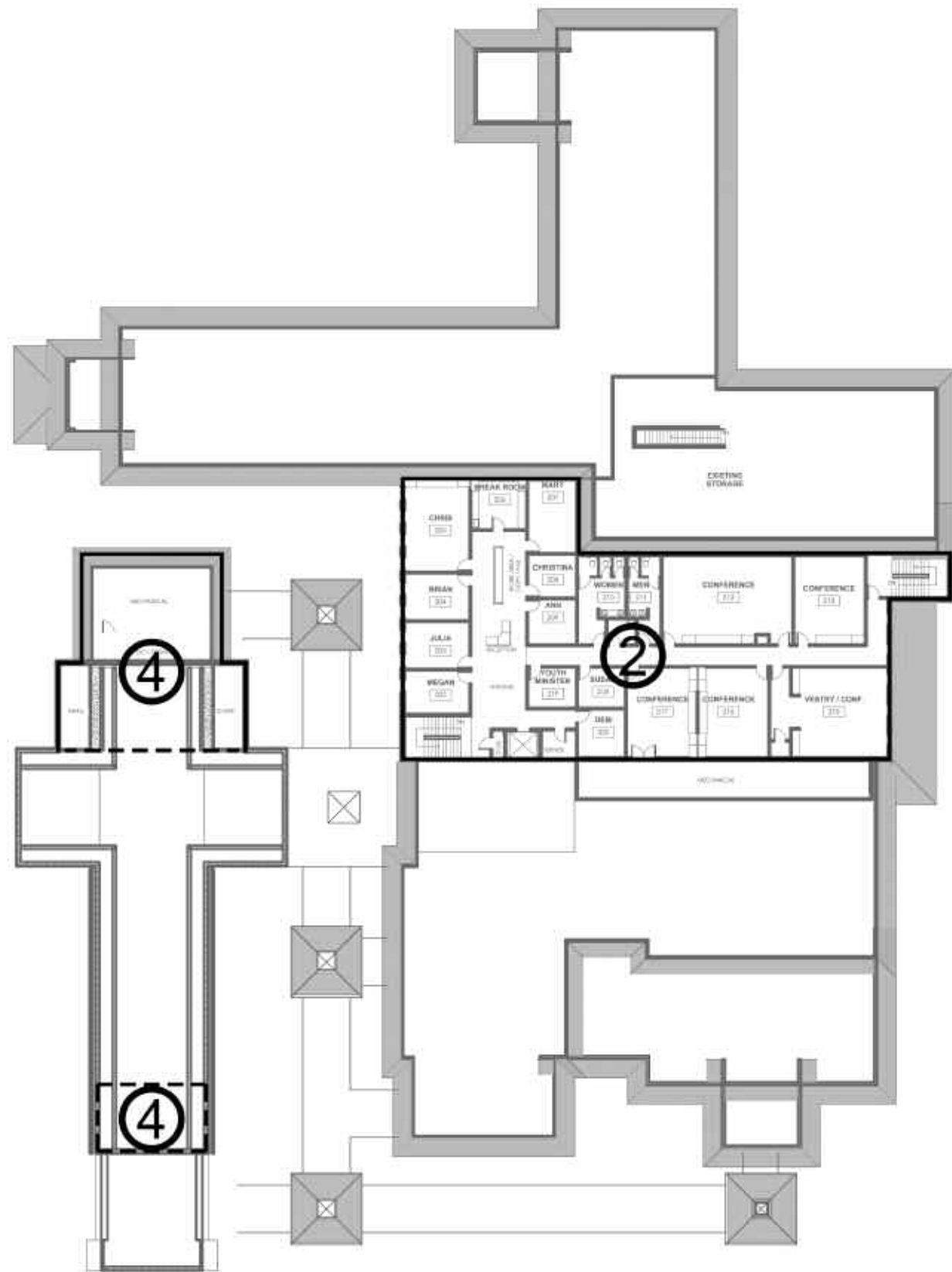
-----  
**Total Proposed Goal: \$7,403,562**

### Why a Capital Campaign?

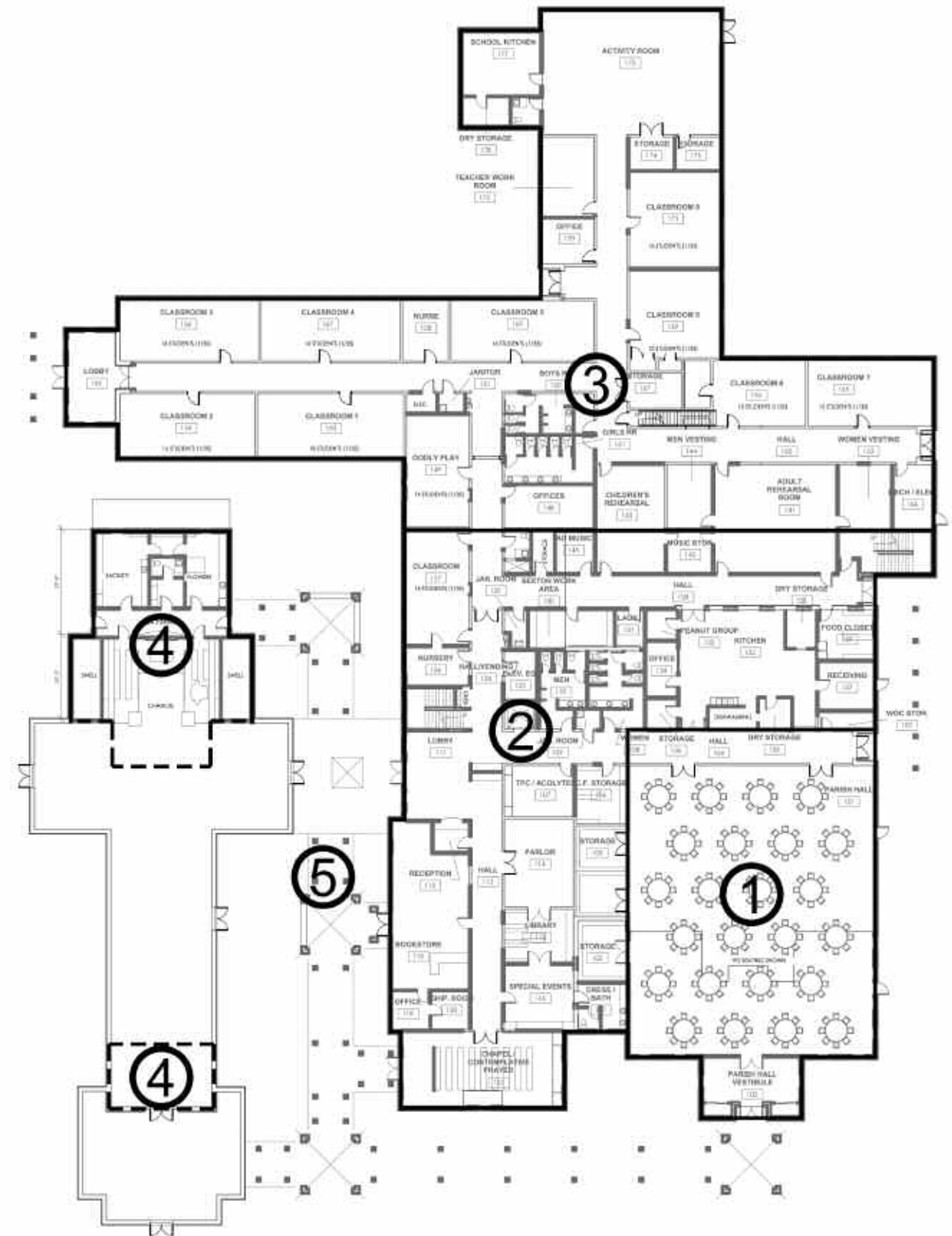
- Increase the size of Parish Hall
- Provide for adequate new space for youth ministry
- Modify the worship space to provide for a chancel and choir thereby freeing up space in the transept for additional seating
- Update and renovate the existing Parish Day School classrooms
- Provide updated office space for clergy and staff
- Increase the size of the choir room to accommodate the growing adult and children's choir
- Update and increase the size of the Chapel Pantry

Rendering is for illustration purposes only. Does not reflect details of final design, particularly with regards to the church entrance.





NEW SECOND FLOOR



NEW FIRST FLOOR



Rendering is for illustration purposes only. Does not reflect details of final design, particularly with regards to the church entrance.



Rendering is for illustration purposes only. Does not reflect details of final design, particularly with regards to the church entrance.